

Penthouse (4-Bedroom + Family)

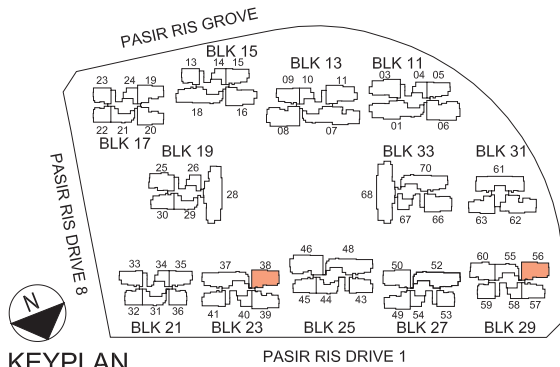
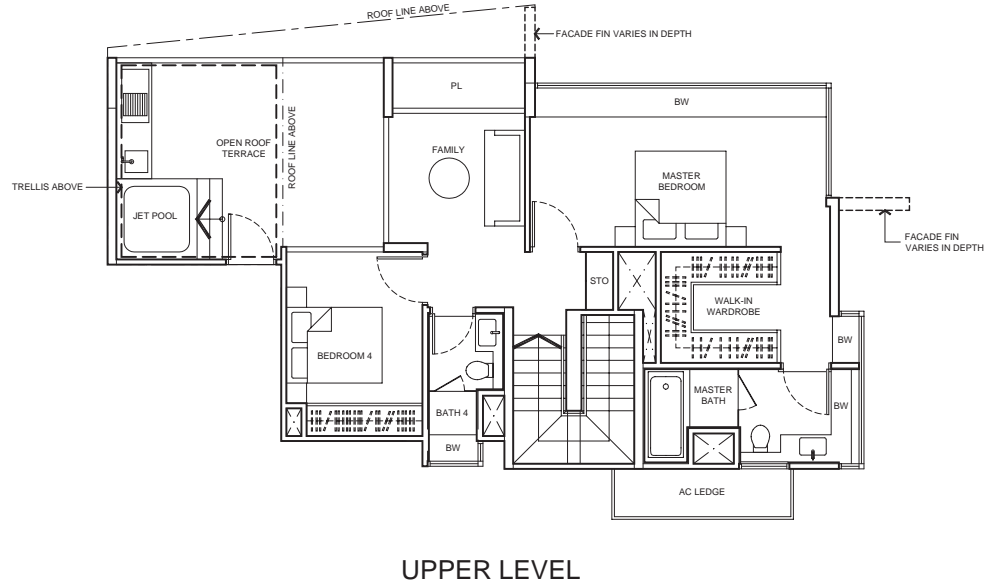
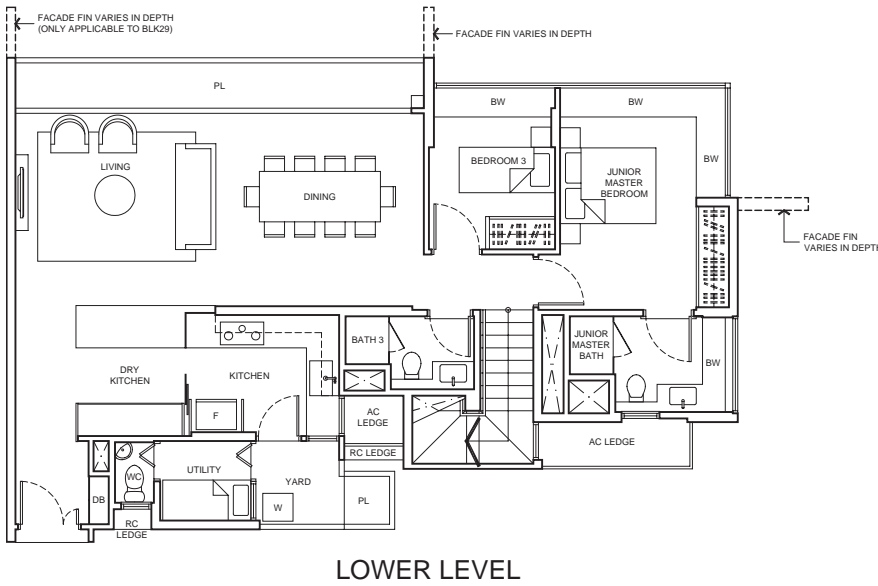
TYPE PH5

216 sq m / 2,325 sq ft

(including 6 sq m / 65 sq ft void above staircase)

BLK23 - #13-38

BLK29 - #15-56



KEY PLAN NOT TO SCALE

Area includes air-con (AC) ledge, planter (PL), bay window (BW), private enclosed space (PES), open roof terrace and void area where applicable. Some units are mirror images of the apartment plans shown in the brochure. Please refer to the key plan for orientation. The plans are subjected to change as may be approved by relevant authorities. All floor plans are approximate measurements only and are subjected to government resurvey.



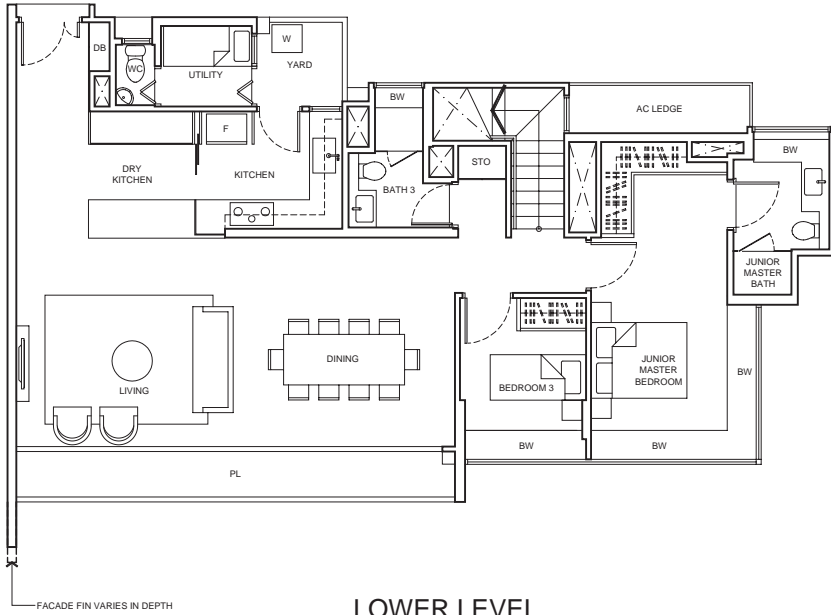
Penthouse (4-Bedroom + Family)

TYPE PH6

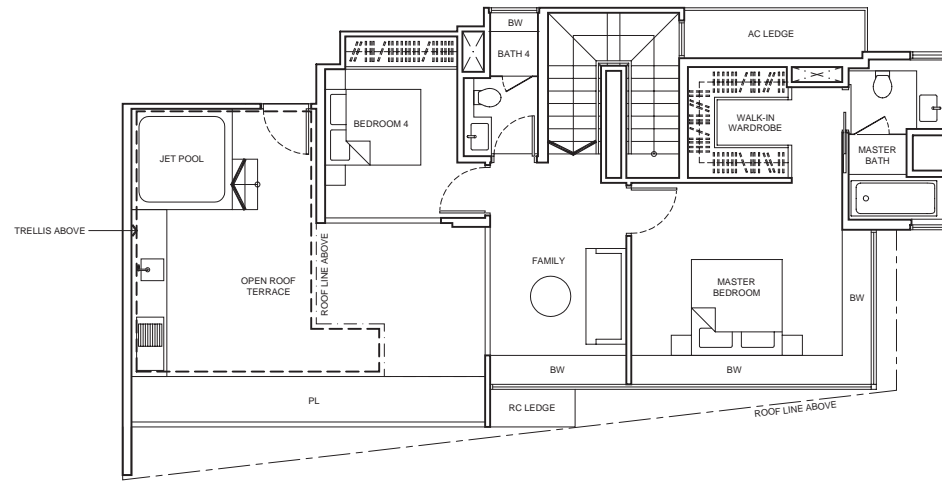
237 sq m / 2,551 sq ft

(including 6 sq m / 65 sq ft void above staircase)

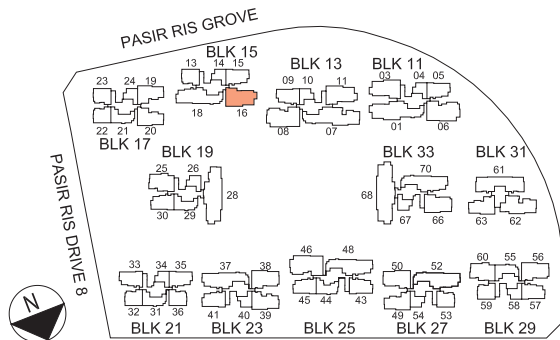
BLK15 - #12-16



LOWER LEVEL



UPPER LEVEL



KEYPLAN NOT TO SCALE

PASIR RIS DRIVE 1



Area includes air-con (AC) ledge, planter (PL), bay window (BW), private enclosed space (PES), open roof terrace and void area where applicable. Some units are mirror images of the apartment plans shown in the brochure. Please refer to the key plan for orientation. The plans are subjected to change as may be approved by relevant authorities. All floor plans are approximate measurements only and are subjected to government resurvey.

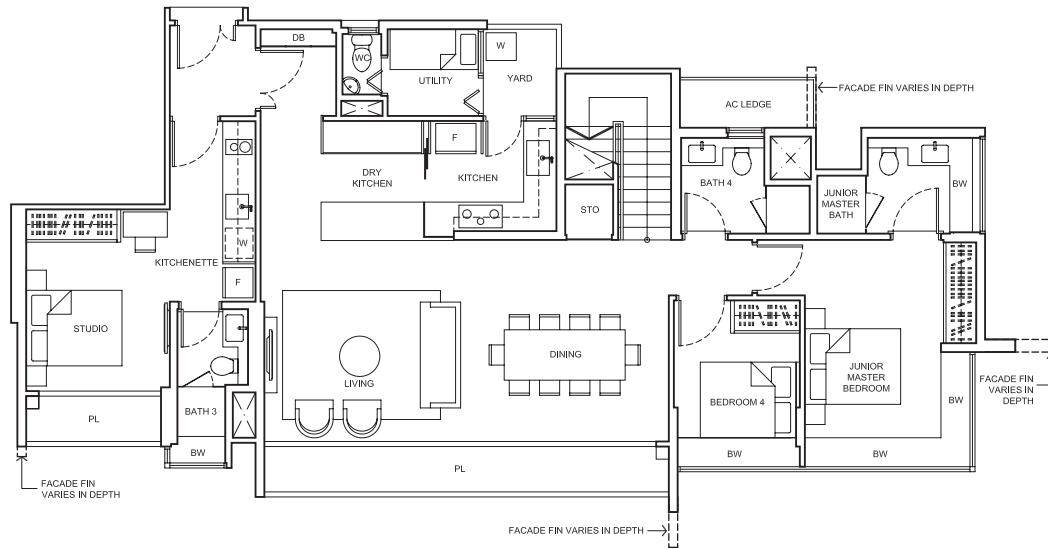
Penthouse (5-Bedroom Dual Key + Family)

TYPE PH8

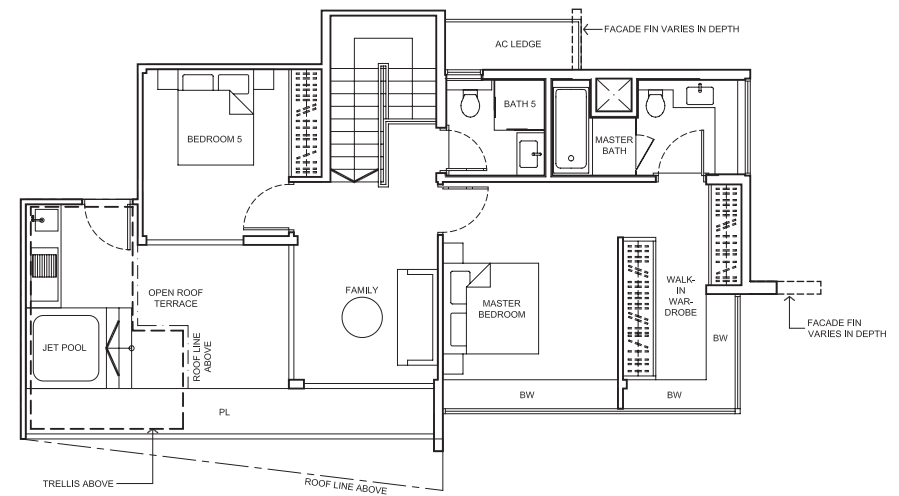
245 sq m / 2,637 sq ft

(including 5 sq m / 54 sq ft void above staircase)

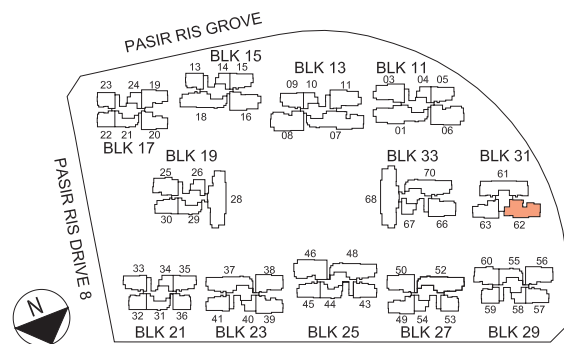
BLK31 - #15-62



LOWER LEVEL



UPPER LEVEL



KEYPLAN NOT TO SCALE

Area includes air-con (AC) ledge, planter (PL), bay window (BW), private enclosed space (PES), open roof terrace and void area where applicable. Some units are mirror images of the apartment plans shown in the brochure. Please refer to the key plan for orientation. The plans are subjected to change as may be approved by relevant authorities. All floor plans are approximate measurements only and are subjected to government resurvey.



Penthouse (5-Bedroom + Family)

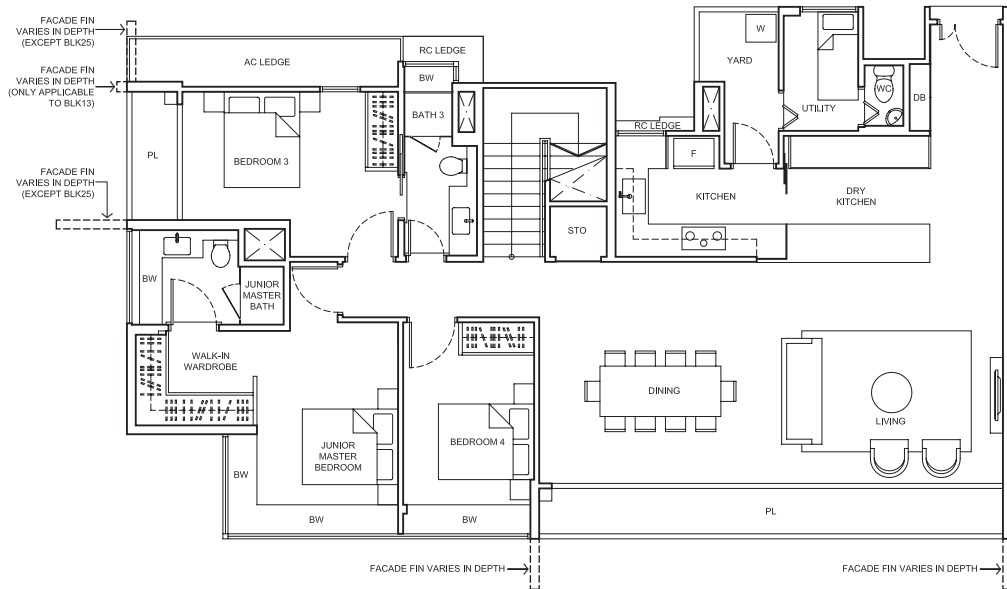
TYPE PH9

288 sq m / 3,100 sq ft
(including 7 sq m / 75 sq ft void above staircase)

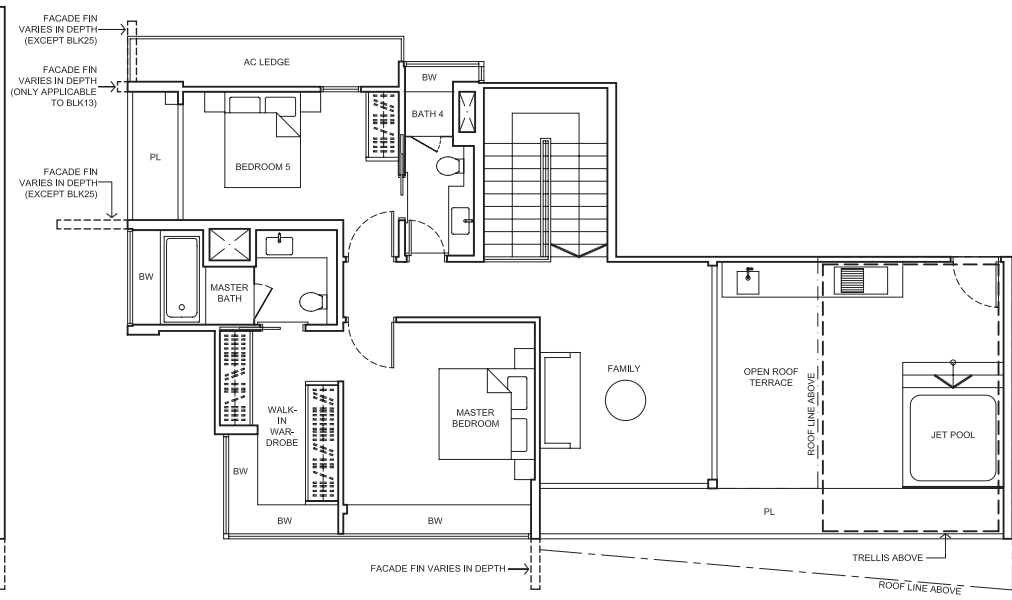
BLK11 - #14-06*

BLK13 - #13-08

BLK25 - #13-46*

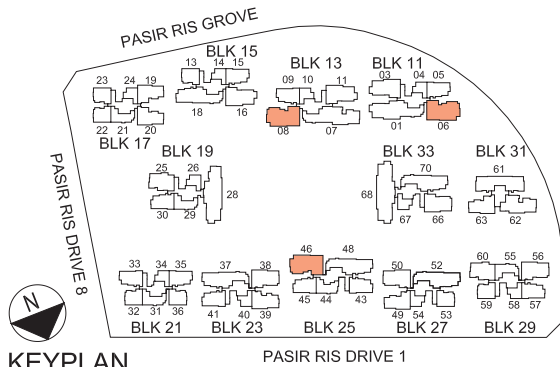


LOWER LEVEL



UPPER LEVEL

*mirror image unit



KEYPLAN
NOT TO SCALE



Area includes air-con (AC) ledge, planter (PL), bay window (BW), private enclosed space (PES), open roof terrace and void area where applicable. Some units are mirror images of the apartment plans shown in the brochure. Please refer to the key plan for orientation. The plans are subjected to change as may be approved by relevant authorities. All floor plans are approximate measurements only and are subjected to government resurvey.