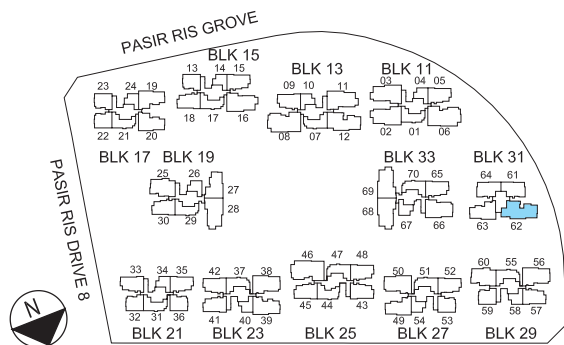
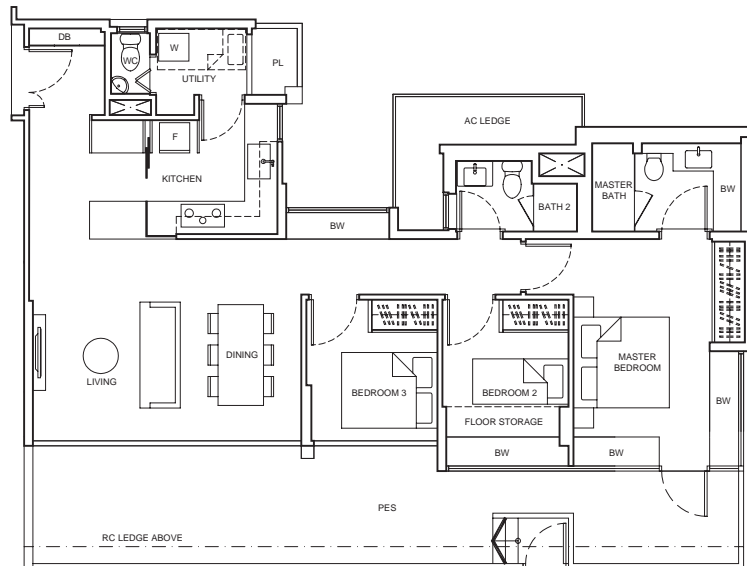


# 3-Bedroom Suite

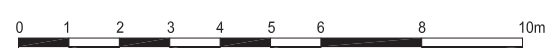
**TYPE C3S (P)<sup>+</sup>**  
 133 sq m / 1,432 sq ft  
 BLK31 - #01-62



**KEYPLAN**  
 NOT TO SCALE

Area includes air-con (AC) ledge, planter (PL), bay window (BW), private enclosed space (PES), open roof terrace and void area where applicable. Some units are mirror images of the apartment plans shown in the brochure. Please refer to the key plan for orientation. The plans are subjected to change as may be approved by relevant authorities. All floor plans are approximate measurements only and are subjected to government resurvey.

\* THE CONFIRMATION OF THE NAME OF UNIT TYPE C3 S(P) FOR UNIT #01-62 IS SUBJECT TO AUTHORITIES' APPROVAL.



# 3-Bedroom Suite

## TYPE C4S (P)

130 sq m / 1,399 sq ft

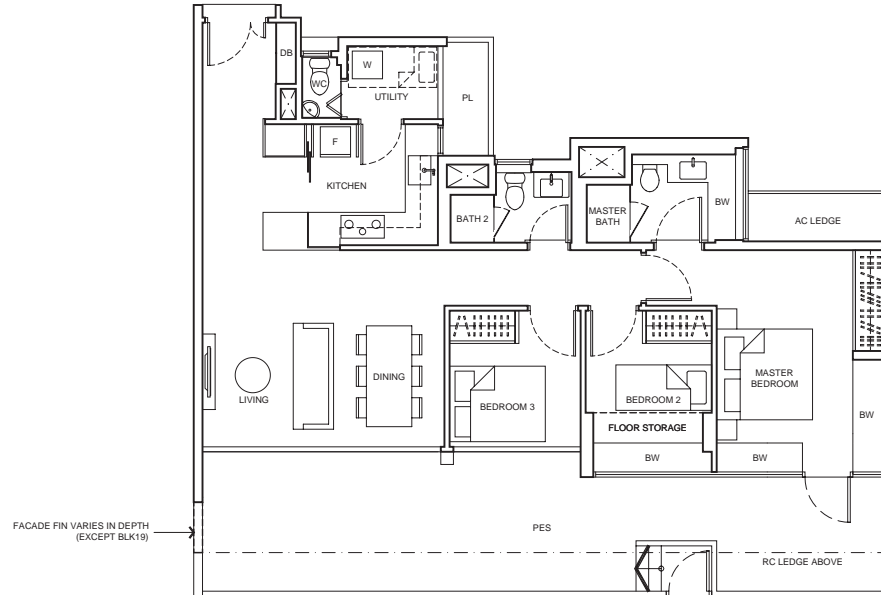
BLK17 - #01-19\*

#01-20

BLK19 - #01-27

BLK27 - #01-49\*

BLK31 - #01-63\*



## TYPE C4S

102 sq m / 1,098 sq ft

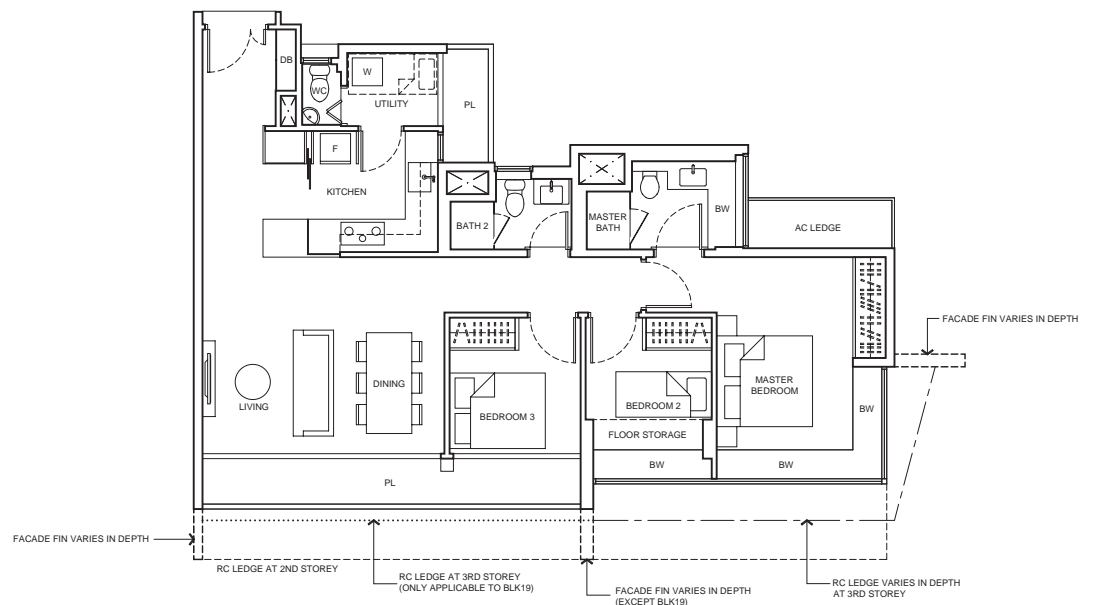
BLK17 - #02-19\* to #12-19\*

#02-20 to #12-20

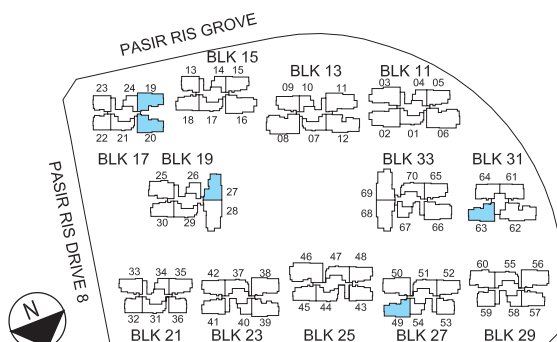
BLK19 - #02-27 to #12-27

BLK27 - #02-49\* to #16-49\*

BLK31 - #02-63\* to #16-63\*



\*mirror image unit



### KEYPLAN NOT TO SCALE

Area includes air-con (AC) ledge, planter (PL), bay window (BW), private enclosed space (PES), open roof terrace and void area where applicable. Some units are mirror images of the apartment plans shown in the brochure. Please refer to the key plan for orientation. The plans are subjected to change as may be approved by relevant authorities. All floor plans are approximate measurements only and are subjected to government resurvey.

