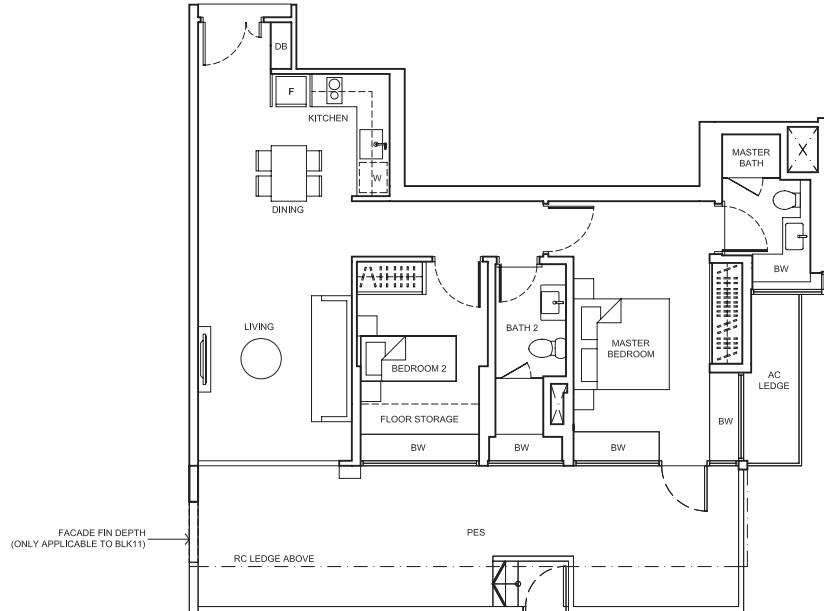


2-Bedroom

TYPE B1 (P)

111 sq m / 1,195 sq ft

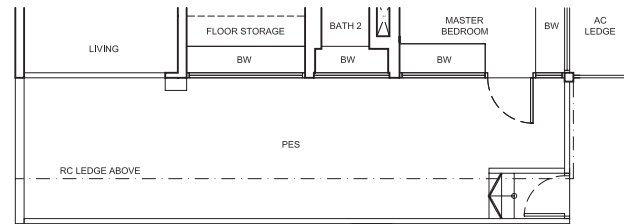
- BLK11 - #01-01
- BLK15 - #01-17
- BLK17 - #01-21
- BLK19 - #01-29
- BLK23 - #01-37*
- BLK27 - #01-51
- BLK29 - #01-55*
- BLK33 - #01-70



TYPE B1 (P)-1

111 sq m / 1,195 sq ft

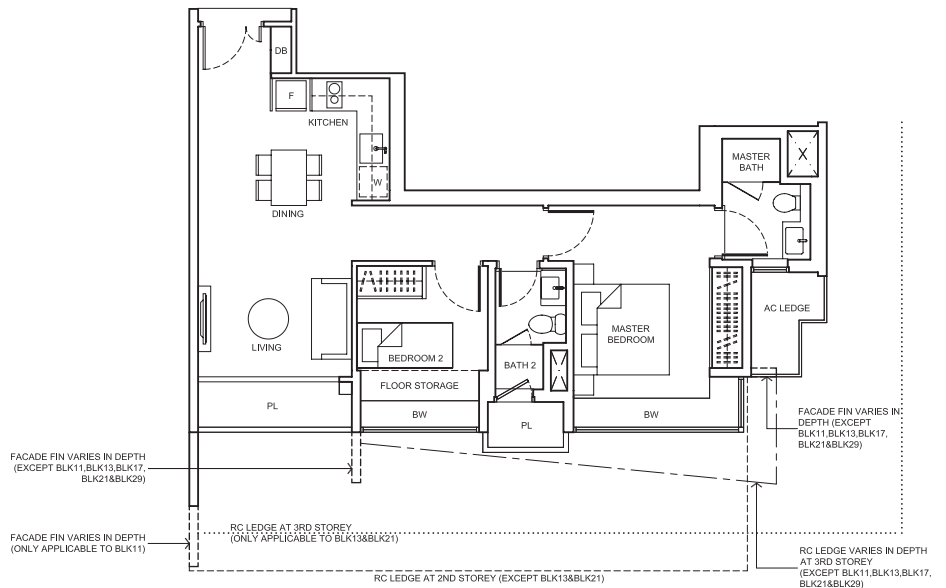
- BLK25 - #01-47



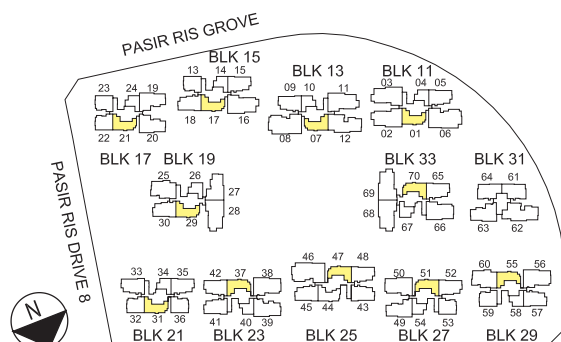
TYPE B1

70 sq m / 753 sq ft

- BLK11 - #02-01 to #14-01
- BLK13 - #03-07* to #13-07*
- BLK15 - #02-17 to #12-17
- BLK17 - #02-21 to #12-21
- BLK19 - #02-29 to #13-29
- BLK21 - #03-31 to #13-31
- BLK23 - #02-37* to #13-37*
- BLK25 - #02-47 to #13-47
- BLK27 - #02-51 to #15-51
- BLK29 - #02-55* to #16-55*
- BLK33 - #02-70 to #14-70



*mirror image unit



KEYPLAN NOT TO SCALE

Area includes air-con (AC) ledge, planter (PL), bay window (BW), private enclosed space (PES), open roof terrace and void area where applicable. Some units are mirror images of the apartment plans shown in the brochure. Please refer to the key plan for orientation. The plans are subjected to change as may be approved by relevant authorities. All floor plans are approximate measurements only and are subjected to government resurvey.

NOTE:

- DEPTH OF PLANTER AND FLOOR STORAGE IS APPROX. 350mm FOR ALL TYPE B1 AT 2ND STOREY.
- CEILING HEIGHT OF TYPE B1(P) & TYPE B1(P)-1 LIVING IS APPROX. 2600mm, MASTER BEDROOM AND BEDROOM 2 IS APPROX. PART 2600mm / 2900mm.



2-Bedroom

TYPE B2 (P)

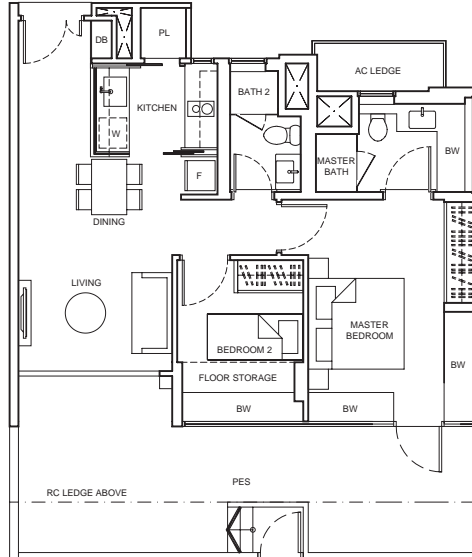
93 sq m / 1,001 sq ft

BLK15 - #01-13

BLK17 - #01-22*
#01-23

BLK27 - #01-53

BLK29 - #01-59*



TYPE B2

69 sq m / 743 sq ft

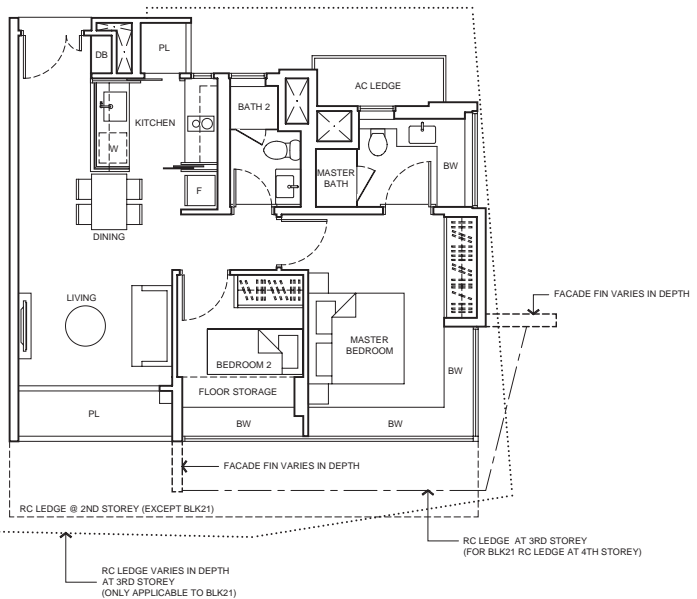
BLK15 - #02-13 to #13-13

BLK17 - #02-22* to #12-22*
#02-23 to #12-23

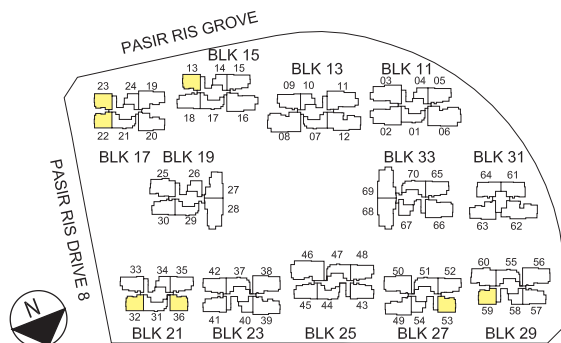
BLK21 - #03-32* to #13-32*
#03-36 to #13-36

BLK27 - #02-53 to #16-53

BLK29 - #02-59* to #16-59*



*mirror image unit



KEYPLAN NOT TO SCALE

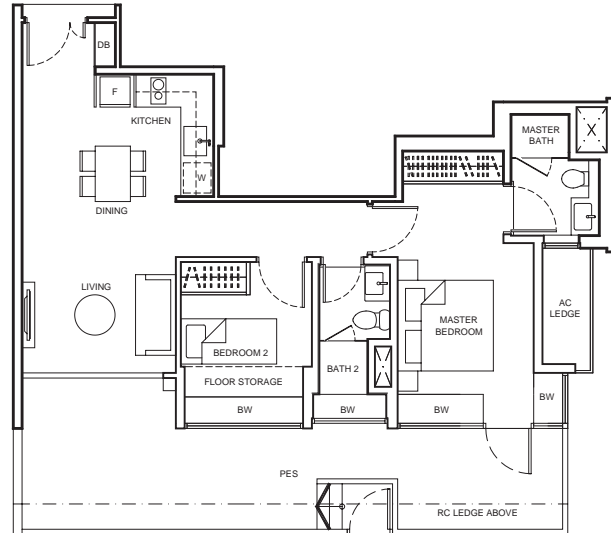
Area includes air-con (AC) ledge, planter (PL), bay window (BW), private enclosed space (PES), open roof terrace and void area where applicable. Some units are mirror images of the apartment plans shown in the brochure. Please refer to the key plan for orientation. The plans are subjected to change as may be approved by relevant authorities. All floor plans are approximate measurements only and are subjected to government resurvey.

NOTE:
- DEPTH OF PLANTER AND FLOOR STORAGE IS APPROX. 350mm
FOR TYPE B2 AT BLK17 - #02-22.

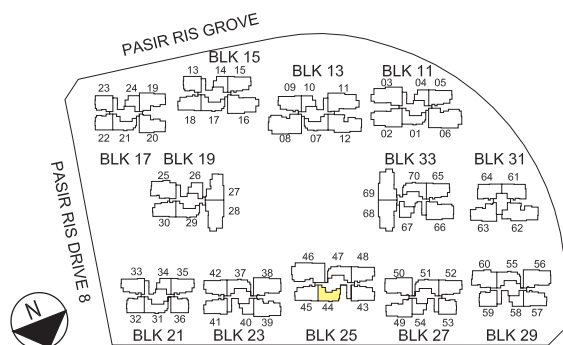
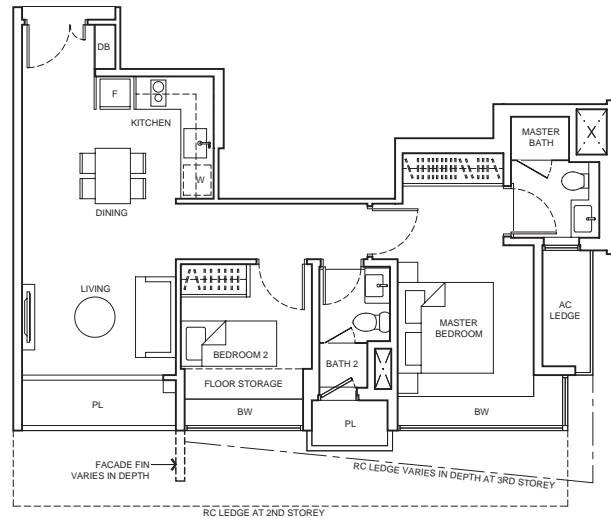


2-Bedroom

TYPE B3 (P)
 91 sq m / 980 sq ft
 BLK25 - #01-44



TYPE B3
 69 sq m / 743 sq ft
 BLK25 - #02-44 to #14-44



KEYPLAN
 NOT TO SCALE

Area includes air-con (AC) ledge, planter (PL), bay window (BW), private enclosed space (PES), open roof terrace and void area where applicable. Some units are mirror images of the apartment plans shown in the brochure. Please refer to the key plan for orientation. The plans are subjected to change as may be approved by relevant authorities. All floor plans are approximate measurements only and are subjected to government resurvey.

