

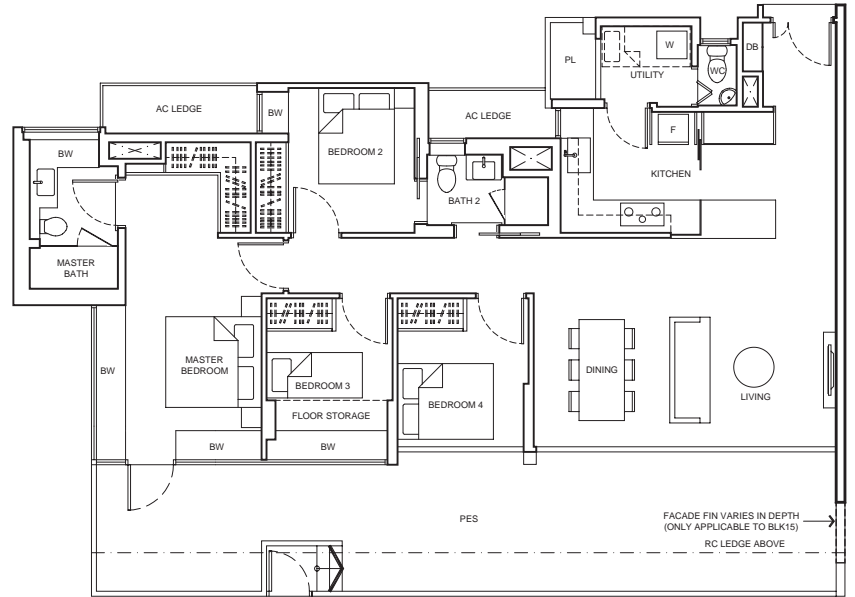
# 4-Bedroom Suite

## TYPE D2S (P)

160 sq m / 1,722 sq ft

BLK15 - #01-16\*

BLK19 - #01-28

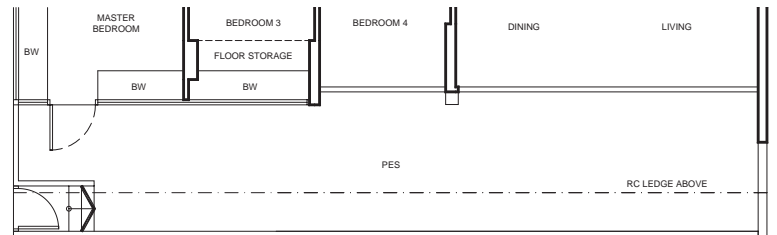


## TYPE D2S (P)-1+

160 sq m / 1,722 sq ft

BLK33 - #01-68\*

#01-69



## TYPE D2S

128 sq m / 1,378 sq ft

BLK11 - #03-02 to #14-02

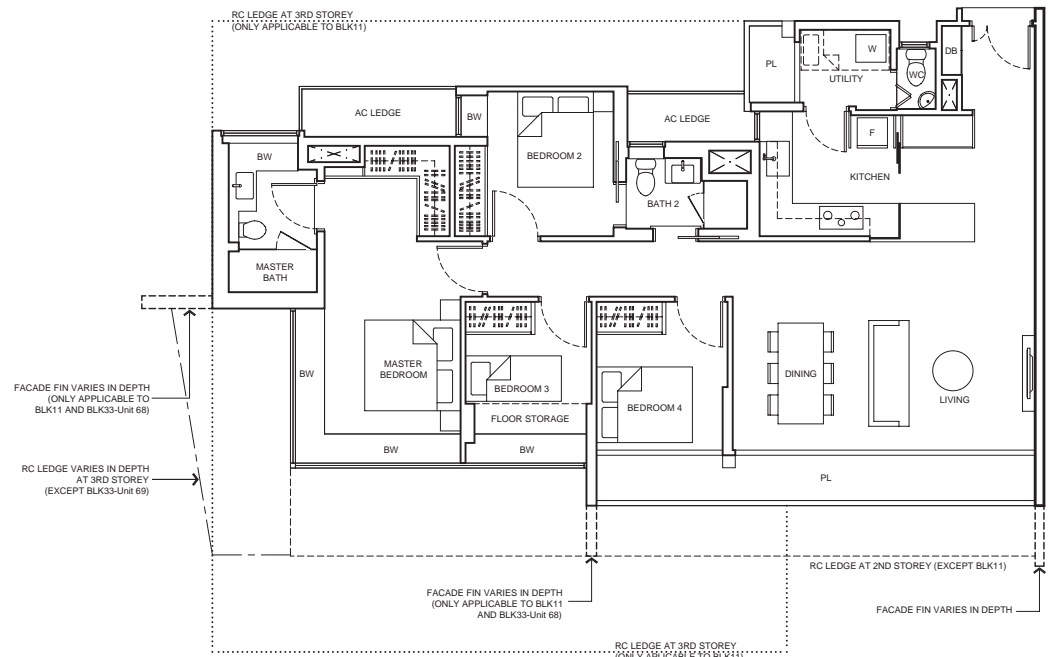
#03-03\* to #15-03\*

BLK15 - #02-16\* to #11-16\*

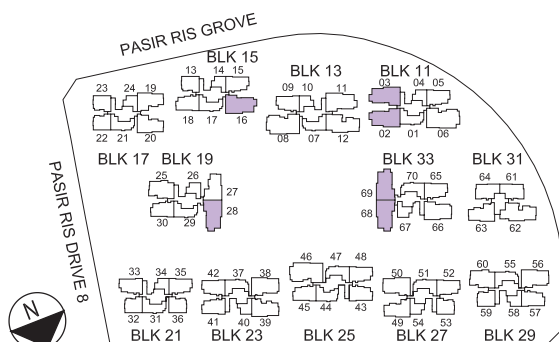
BLK19 - #02-28 to #12-28

BLK33 - #02-68\* to #14-68\*

#02-69 to #14-69



\*mirror image unit



## KEYPLAN NOT TO SCALE

Area includes air-con (AC) ledge, planter (PL), bay window (BW), private enclosed space (PES), open roof terrace and void area where applicable. Some units are mirror images of the apartment plans shown in the brochure. Please refer to the key plan for orientation. The plans are subjected to change as may be approved by relevant authorities. All floor plans are approximate measurements only and are subjected to government resurvey.

\* THE CONFIRMATION OF THE NAME OF UNIT TYPE D2S (P)-1 FOR UNIT #01-68 AND #01-69 IS SUBJECT TO AUTHORITIES' APPROVAL

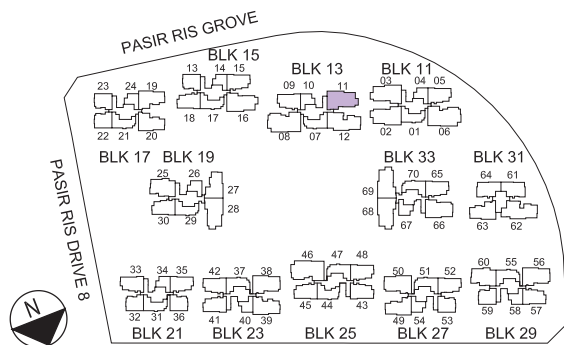
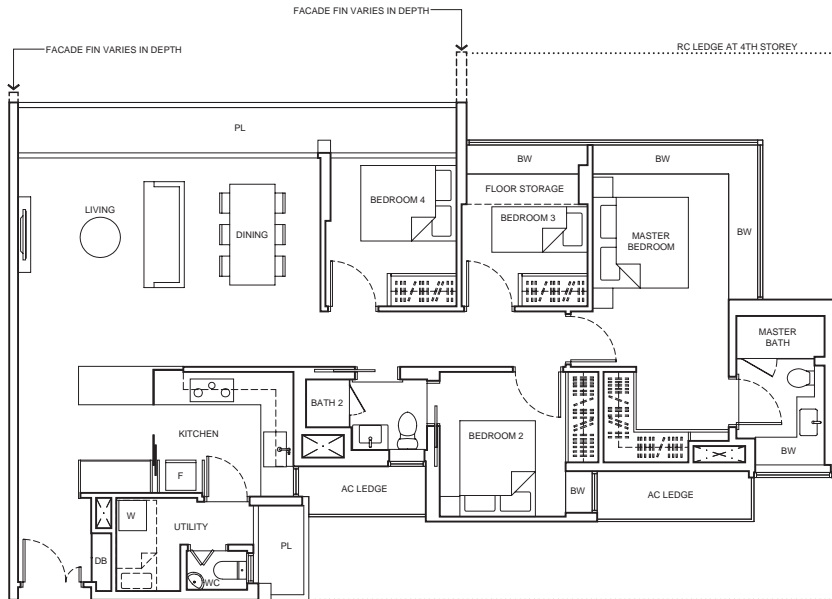


# 4-Bedroom Suite

## TYPE D3S

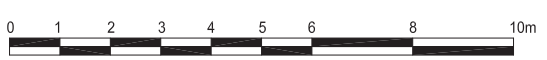
129 sq m / 1,389 sq ft

BLK13 - #04-11 to #14-11



**KEYPLAN**  
NOT TO SCALE

PASIR RIS DRIVE 1



Area includes air-con (AC) ledge, planter (PL), bay window (BW), private enclosed space (PES), open roof terrace and void area where applicable. Some units are mirror images of the apartment plans shown in the brochure. Please refer to the key plan for orientation. The plans are subjected to change as may be approved by relevant authorities. All floor plans are approximate measurements only and are subjected to government resurvey.